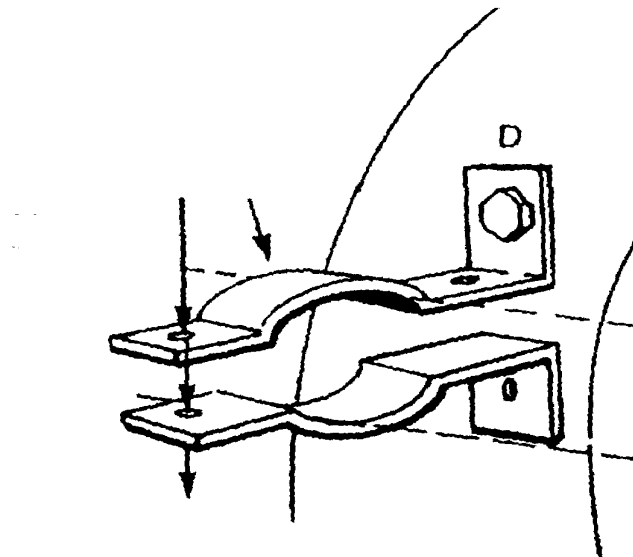


RAIL FIXING

1. Temporarily remove all the bolts from all the brackets.
2. Using the top two pre-drilled bolt holes (D) on the housing/cabinet fix one half of a bracket to each of them with two of the shorter bolts.
3. The housing will now hang on the top rail enabling accurate positioning of the lower halves of the brackets and drilling of the housing (8mm dia drill bit).
4. Using short bolts, fix the bottom half of the brackets to housing. Using the long bolts, clamp bracket halves together.
5. Bottom rail fixing. The top halves of the brackets can rest over the bottom rail and hole positions marked and drilled through housing (8mm dia drill bit)
6. Repeat step 4



WALL FIXING

1. Offer housing up to wall and mark the mounting holes on the wall.
2. Drill and plug if necessary and using 4 bolts using collar washers fix the housing/ cabinet to the wall,